

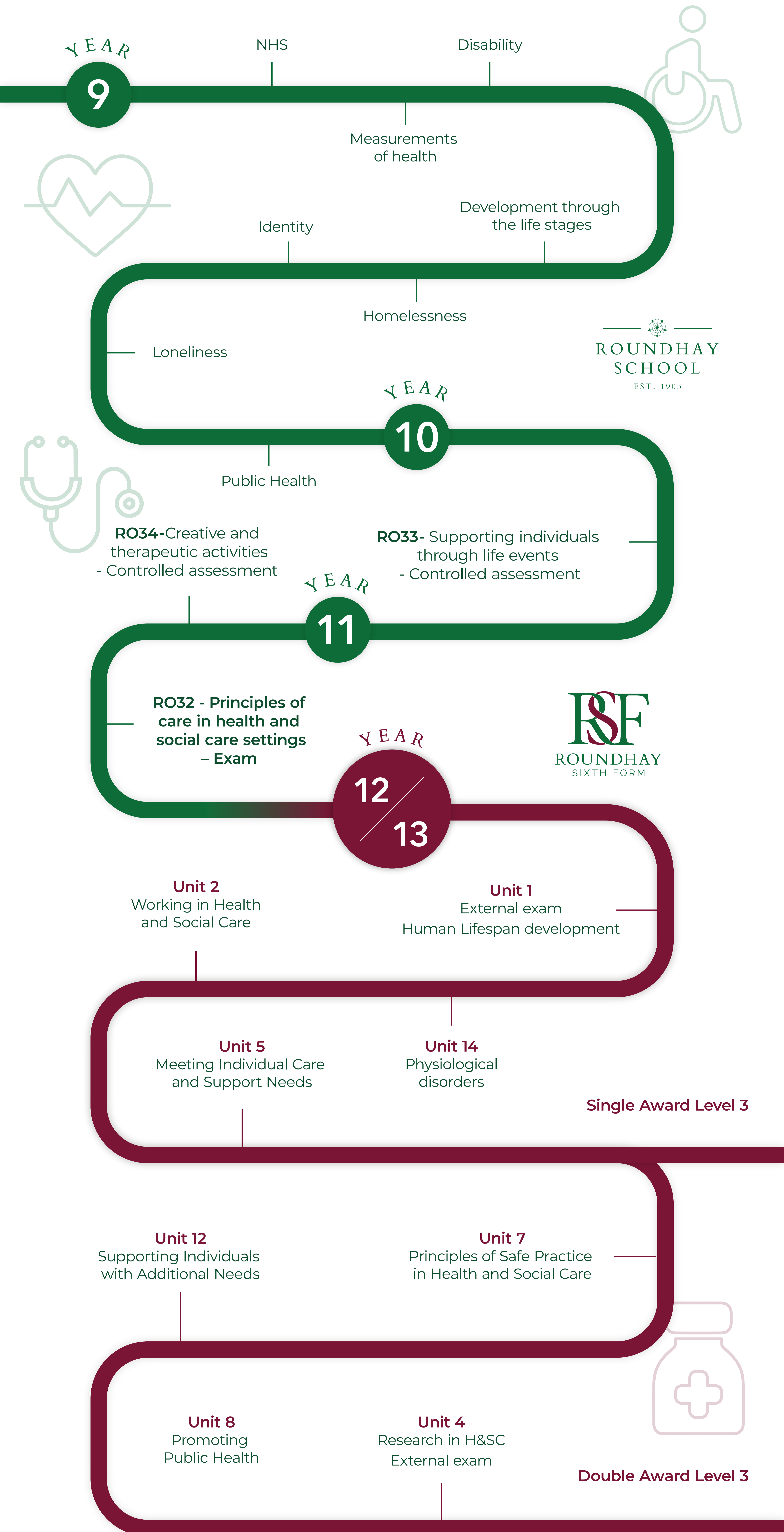
HEALTH & SOCIAL CARE

Subject Vision

Health and Social Care education is a vital tool in equipping young people with the skills and knowledge that they need to become responsible, empathetic and compassionate members of a wider, diverse and inclusive community.

Aims:

- Actively engage in the processes of health and social care to develop as effective and independent learners;
- Understand aspects of personal development, and the health, social care and early years sectors, through investigation and evaluation of a range of services and organisations;
- Develop a critical and analytical approach to problem-solving within the health, social care and early years sectors;
- Examine issues which affect the nature and quality of human life, including an appreciation of diversity and cultural issues.
- Develop their awareness of the influences on an individual's health and wellbeing;
- Understand the importance of motivation and support when improving health.



GCSE Exam Board: Pearson

Level 1/2 BTEC Tech Award A Level Exam Board: Pearson

Level 3 BTEC Extended Certificate/ Diploma